



Adresse / Address

Datum / Date

Kontakt / Contact

07/2012

Ledermann GmbH & Co. KG
Willi-Ledermann-Str. 1
D-72160 Horb a.N.

Tel. +49 (0) 74 51 / 93 - 0
info@leuco.com
www.leuco.com

Betreff / Subject

Perfect fit! Clamping adapter Sets and LEUCO Grooving Cutters for WEEKE BHX series

Seite / Page

01/02

Inhalt / Content

Especially for the WEEKE BHX series LEUCO offers adapter sets for flexible clamping of tools with small shank diameters (< 25mm) and HW grooving cutters with a new tooth geometry.

Exciting clamping flexibility: The smart StarterKits by LEUCO

By means of high precision collet chucks the tools are mounted in adapters especially designed to match the hydro clamping system of the BHX milling spindle. A new internal (!) tightening nut provides stable and precise hold. The construction minimizes the projection of the reduction adapter. This allows longer working lengths of the drilling tools. An individual pre-setting of tools outside of the machine is possible, thus resulting in time-saving tool changes.

StarterKit „SET 1“

- | 3 clamping adapters incl. tightening nuts
- | 3 collet chucks (8, 10 und 12 mm)
- | 1 mounting block
- | 1 hook wrench
- | 1 screw-in aid

StarterKit „SET 2“

- | 5 clamping adapters incl. tightening nuts
- | 5 collet chucks (8, 10 und 16 mm)
- | 1 mounting block
- | 1 hook wrench
- | 1 torque nut

LEUCO Grooving Cutters „g5-System“ for WEEKE BHX series

Diameter, pin holes and cutting widths of these grooving cutters are tailored to the needs of the WEEKE BHX series.

In addition, the successful LEUCO g5-System of the LEUCO saw blades was applied for the first time in the industry sector to a TCT grooving cutter. „LEUCO g5-System“ means a tooth group combination of ATB and flat tooth geometry.

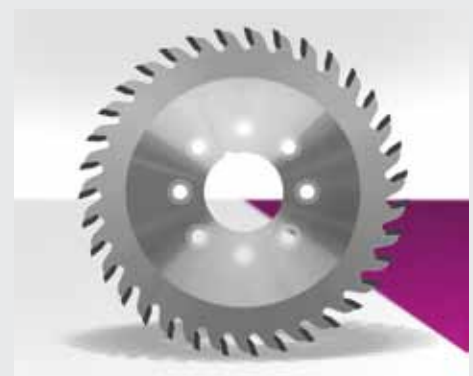
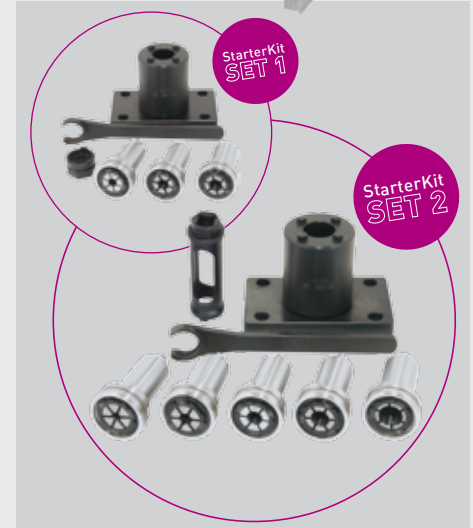
Advantages

- | excellent cutting quality and chip-free grooving in solid woods, raw and laminated wood-based panels and plastics
- | especially low noise level
- | long edge lives thanks to highly wear-resistant cutting material

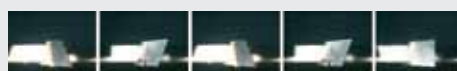
Bildmaterial / Imagery



Bild: Weeke



LEUCO
g5 system



LEUCO

www.leuco.com



Adresse / Address

Datum / Date

Kontakt / Contact

07/2012

Ledermann GmbH & Co. KG
Willi-Ledermann-Str. 1
D-72160 Horb a.N.

Tel. +49 (0) 74 51 / 93 - 0
info@leuco.com
www.leuco.com

Betreff / Subject

Seite / Page

Perfect fit! Clamping adapter Sets and LEUCO Grooving Cutters for WEEKE BHX series

02/02

Inhalt / Content

Order information StarterKits

Description	Ident-No.
StarterKit „SET 1“	184359
StarterKit „SET 2“	184360

StarterKit components and spare parts - to be ordered separately

Description	StarterKit „SET 1“	StarterKit „SET 2“	Class-No.	Ident-No.
clamping adaptor D25x16 mm incl. tightening nut	3	5	933250	184362
mounting device	1	1	985202	184363
hook wrench D25 L=200	1	1	985720	184364
screw-in aid D30 SW 27 H20	1	-	985720	184365
torque nut D30 SW22 H96	-	1	985720	184366
collet chuck 4 11E D=1	-	-	933280	184367
collet chuck 4 11E D=2	-	-	933280	184368
collet chuck 4 11E D=3	-	-	933280	184369
collet chuck 4 11E D=4	-	-	933280	184370
collet chuck 4 11E D=5	-	-	933280	184371
collet chuck 4 11E D=6	-	1	933280	184372
collet chuck 4 11E D=8	1	1	933280	184373
collet chuck 4 11E D=10	1	1	933280	184374
collet chuck 4 11E D=12	1	1	933280	184375
collet chuck 4 11E D=16	-	1	933280	184376
torque wrench 40-200Nm	-	-	985720	184377
tightening nut M43x1,5	-	-	995290	184378

Bildmaterial / Imagery



- [a] hook wrench
- [b] torque socket
- [c] mounting device
- [d] tightening nut
- [e] collet chuck
- [f] clamping adapter
- [g] screw-in aid

Order Information LEUCO Grooving Cutter „g5-System“ for WEEKE BHX series

Ø D [mm]	B [mm]	b [mm]	Ø d [mm]	Z	NL	Ident-No.
100	4.0	2.8	30	35		Weeke BHX 050/055 189994
125	4.0	2.8	30	35	2x4/5,5/48	Weeke BHX 500 series and other machining centers and aggregates 189993
100	5.0	2.8	30	35		Weeke BHX 050/055 191947
125	5.0	2.8	30	35	2x4/5,5/48	Weeke BHX 500 series and other machining centers and aggregates 191946

